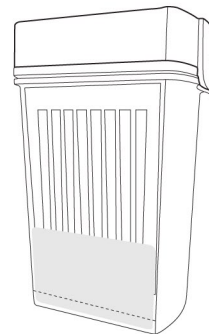


PROCEDURE CARD

- Bring tests and specimens to room temperature (15-30°C/59-86°F) before use. Donors should avoid placing anything (including food, drink, gum and tobacco products) in their mouth for at least 10 minutes prior to specimen collection.
- The oral fluid specimen should be collected using the collector provided with the kit. No other collection devices should be used with this drug test.

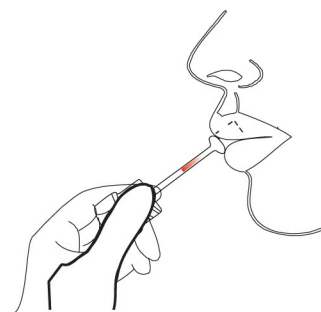


A

Using the provided collection swab, have donor sweep inside of mouth (cheek, gums, tongue) several times, then hold swab in mouth until color on the saturation indicator strip appears in the indicator window of collection swab. **Important: Do not bite, suck, or chew on the sponge.**

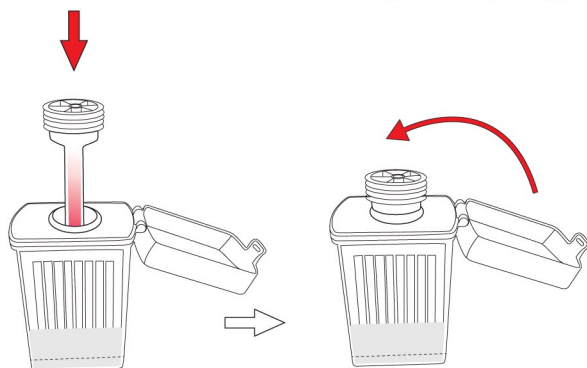


NOTE: If after 7 minutes, color on the saturation indicator has not appeared in the indicator window, proceed with step B of the test.



B

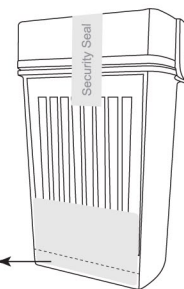
Open the cap and place the test device on a clean and flat surface. Remove the collection sponge from the mouth and insert the sponge into the screening device **gently and slowly** until touch the bottom of the saliva cup, pushing the cap until it locked in place of the saliva cup. **Keep upright on flat surface when inserting the sponge.**



C

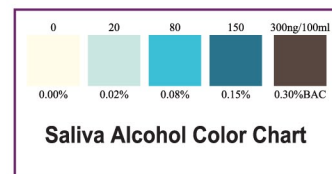
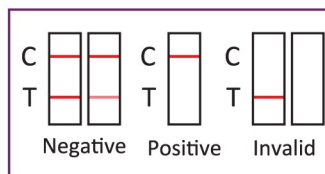
Keep upright while test is running. Wait for the colored signal to appear in test result area.

Peel off to check the specimen while no wicking issue occurred



D

Read the results at **10 minutes**. Read saliva alcohol pads at **3 minutes**.



Note: 1, Once the collection sponge locks in place, the device is airtight, tamper evident, and ready to be disposed or sent to lab for confirmation (on presumptive positive result).
 2, If no wicking issue occurred, please peel off the label at the bottom of the device as marked to check if there is enough specimen (obviously specimen residue) or the saliva is too thick or viscous to run.
 3, In the case of no flowing even with enough saliva specimen, or the saliva is too thick to run, please move the device but don't tilt and keep upright back and forth on a flat and clean surface for several times until the saliva flows up (please peel off the specimen label to easily check and make sure the oral fluid can touch the strips to run). Do not tilt the device when the test is running before reading results.