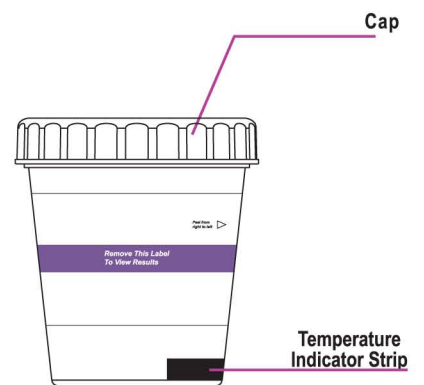
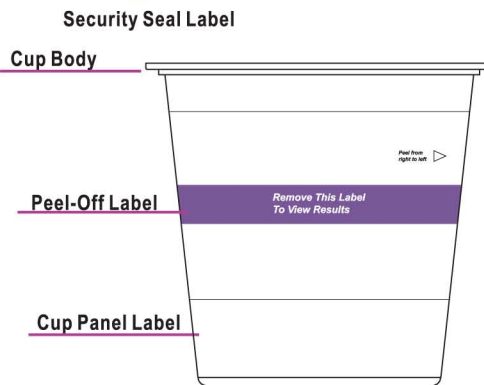
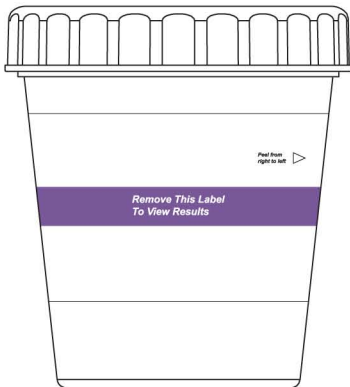


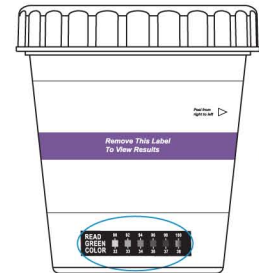
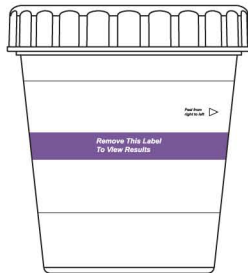
Initials	Date	SECURITY SEAL LABEL
----------	------	---------------------



1 Donor provides urine specimen in cup. If desired, cap can be held by operator to initiate the test at a later time.

2 Once urine sample has been collected, screw cap **firmly** until you heard a click.

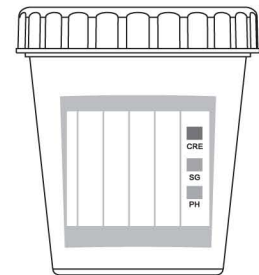
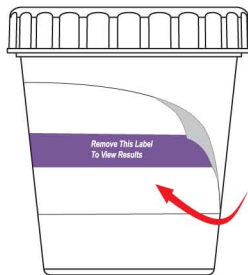
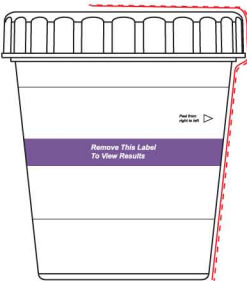
3 Check urine temperature at 2-4 minutes by reading green color on temperature indicator strip.



4 Donor dates and initials security seal. Operator checks cap for tightness and attaches security seal label over cap as shown (Optional).

5 Remove peel-off label.

6 Read adulteration strip pads between 2 minutes, if applicable.



7 Read test results at 5 minutes. Refer to diagram below for result interpretation.

8 Positive test results must be confirmed by another test method. Send cup and urine specimen with security seal label intact to a toxicology laboratory for confirmation.

