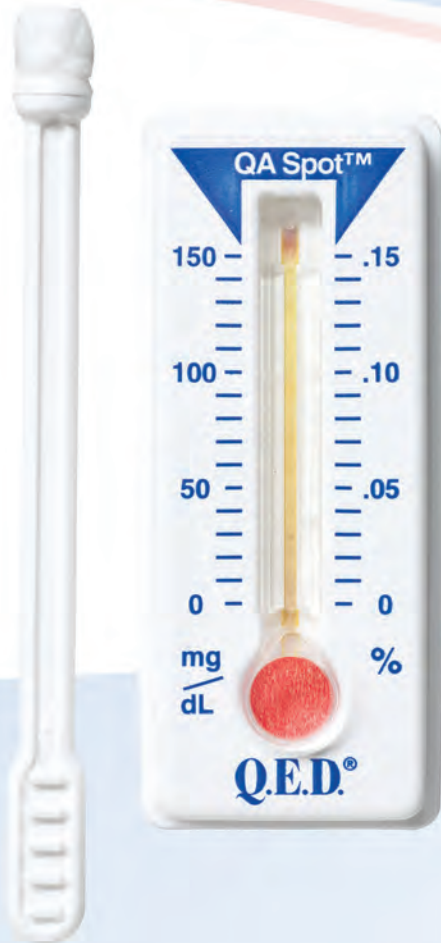


# The On-The-Spot Leader in Saliva Alcohol Testing



**Q.E.D.®**  
SALIVA ALCOHOL TEST

- Simple
- Accurate
- Reliable
- FDA Cleared
- DOT Approved
- CLIA-Waived

The Q.E.D.® Saliva Alcohol Test is the “on-the-spot leader” in the rapid, accurate and quantitative determination of alcohol in saliva. With a high correlation to blood-alcohol levels, QED® has a testing range of 0-145 mg/dl and provides quantitative results in minutes.

The Value of a Reliable and Trusted Brand



OraSure Technologies

# Q.E.D.<sup>®</sup> Rapid Saliva Alcohol Testing

## 3 Easy Steps to Quantitative Results



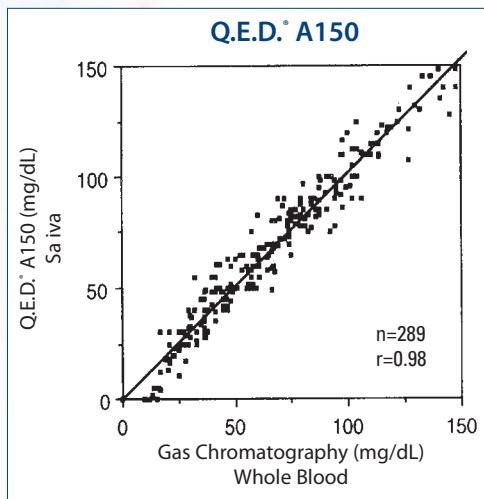
1. Swab mouth to collect saliva.



2. Insert collector into test.



3. Read color bar.



### On-Site Simplicity with Clinical Lab Accuracy . . .

The Q.E.D.® test can be used as an accurate screen in place of blood tests. In clinical trials, saliva alcohol levels measured with the Q.E.D.® tests demonstrated high correlation to blood analyzed by gas chromatography ( $r=0.98$ )<sup>1</sup> and produced no false positive or false negative results<sup>2</sup>.

Data on file <sup>1</sup>Study conducted by Thomas Jefferson University Hospital, Department of Emergency Medicine  
<sup>2</sup>Study conducted by Rutgers University, Center of Alcohol Studies

### It's Reliable, Fast, Simple . . .

- Built-in QA Spot™ assures quality control for every test
- Quantitative results in minutes
- Long shelf life
- Reads like a thermometer
- No instrumentation
- Non-invasive

### The Q.E.D.® test is used for . . .

#### Worksite testing for DOT and non-DOT

- Pre-employment or pre-duty
- Random testing
- Post-accident
- Reasonable cause
- Follow-up testing

#### Alcohol treatment centers

- Testing upon admission
- Interventions
- Counseling sessions
- Random testing

#### Emergency/trauma departments

- Pre-discharge
- Admission screening
- Routine trauma treatment protocol
- Seizure or unconscious victims

### Additional Information . . .

- Available testing range: A150 (0-145 mg/dL, 0-0.145%)
- DOT Screening Test Technician Certification available from Nationwide Network of Trainers or **NEW** DOT-approved training video
- Toll Free Technical Support Monday thru Friday 8 a.m. - 6 p.m. (eastern time)

### OraSure Technologies

#### Product Number

31150(B,C)  
31050S  
31150T  
31150X  
31000V

#### Description

Q.E.D.® A150 case of 30 tests(B), case of 100 tests(C)  
Q.E.D.® DOT Ethanol Control (also 31150S, 31350S)  
Screening Test Technician (STT) Training Video Kit  
Additional STT Training Student Workbooks  
Q.E.D.® Procedure Video case of 10



**OraSure Technologies**

220 East First Street • Bethlehem, PA 18015  
[www.orasure.com](http://www.orasure.com) • 1-800-ORASURE